

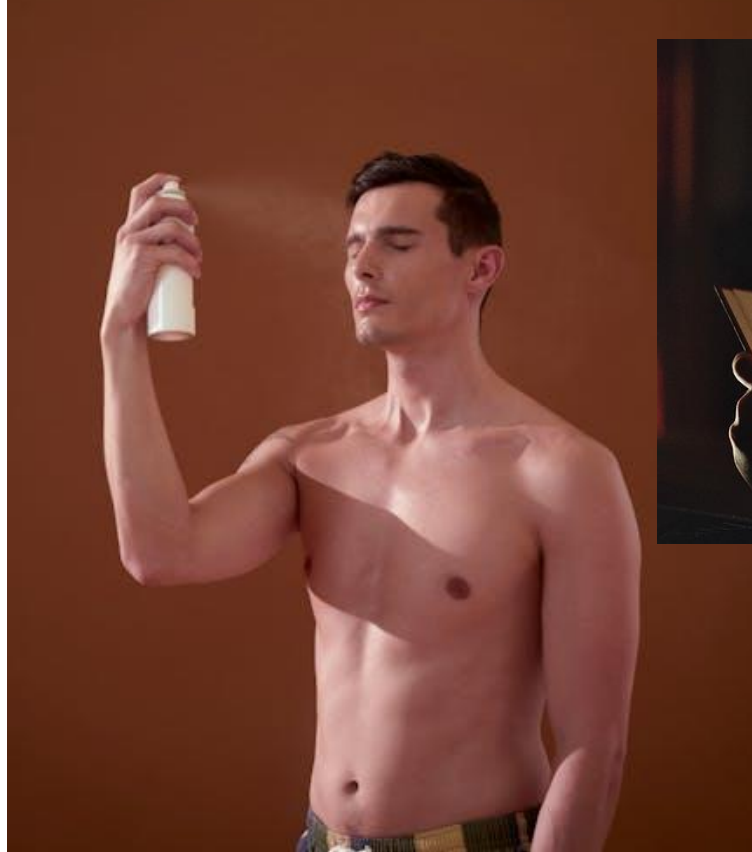


Spray the outside of your glasses and glass cups and then add your beverage to structure and energize the liquid more completely as the liquid enters the container



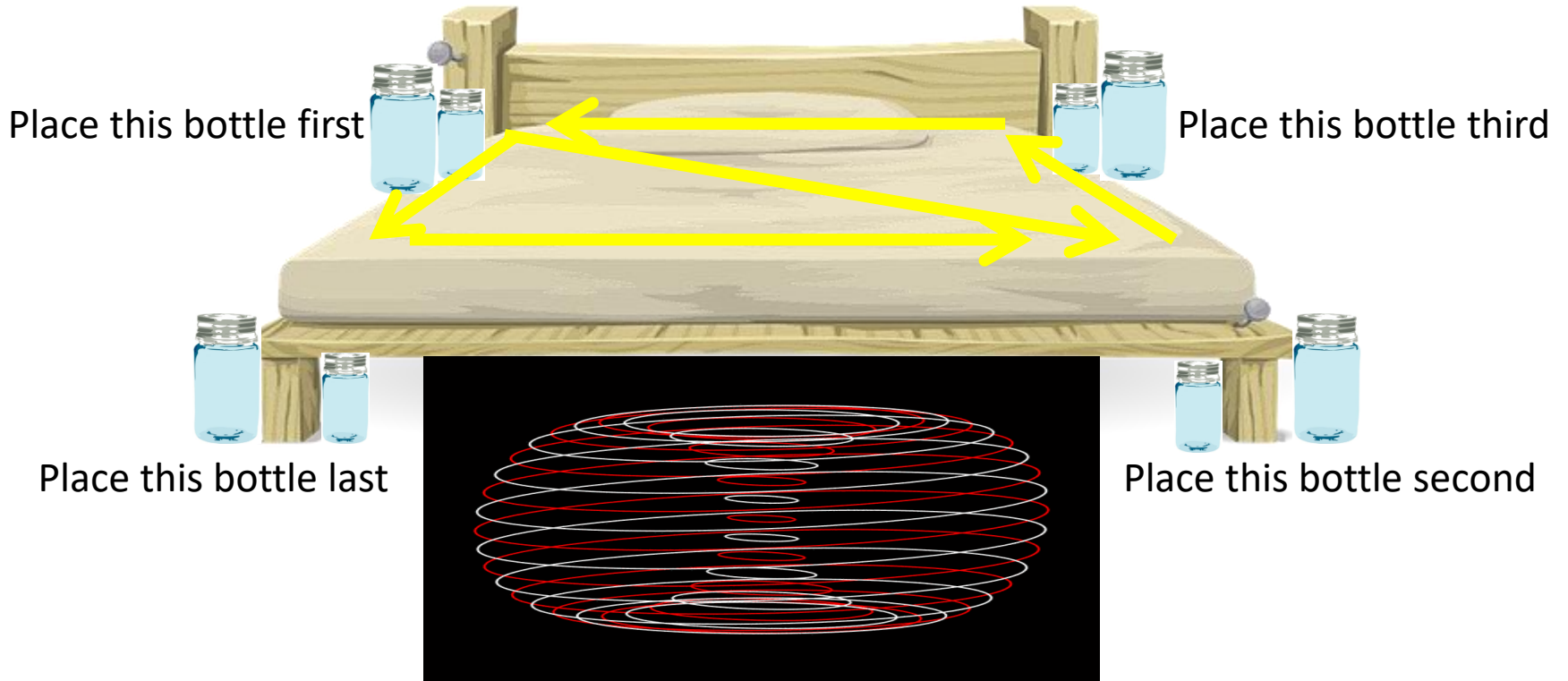
Spray your face  
Spray your kids  
Spray your plants  
Spray your pets  
Spray your food  
Spray your Chakras  
Spray Yourself

Neutralize EMF  
Instant Protection  
Instant Grounding  
Clear your mind  
Improve Health



# How To Set An Energy Vortex Around Your Bed

Large bottles on the outside of bed  
Small bottles under the bed



Placing the bottles as designed will create a counter clockwise spinning vortex around the bed and a safe space for sleeping. Recharge bottles every 5 to 7 days.

# How To Set An Energy Vortex On 1 Metre Square Floor Area

Spray this corner first

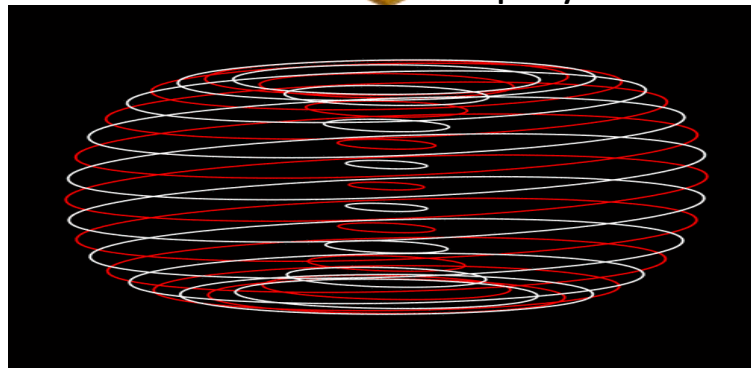
Spray this corner last

Spray this corner third

Spray this corner second



Use same formula  
to do your chair



Stand someone in the vortex, see if they  
Feel the shift, test their strength & balance